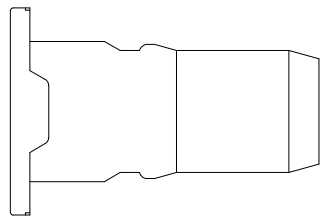
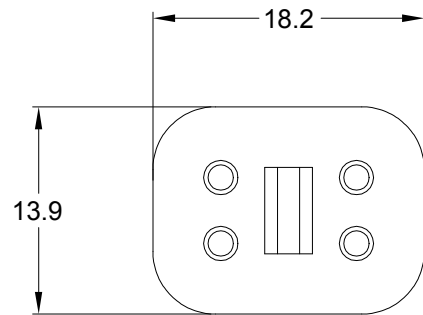
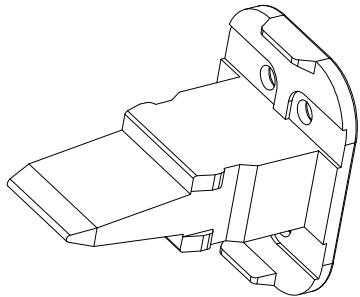
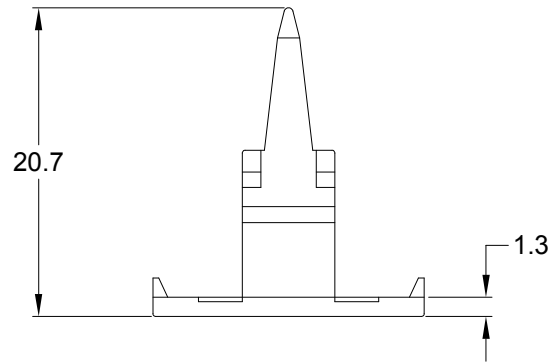


REVISIONS					
REV	ECO	DESCRIPTION	DATE	BY	APPR
A3	--	RELEASE NEW DWG FORMAT	18/SEP/13	DRP	
A4	--	UPDATE DRAWING	10/MAY/19	JOE	TOMMY



- NOTES: UNLESS OTHERWISE SPECIFIED**
1. MATERIAL: THERMOPLASTIC; COLOR: GREEN
  2. RoHS COMPLIANT
  3. CAVITIES: 4
  4. KEYED: N/A
  5. USE WITH CONNECTORS AT06-4S\*  
(\* = MODIFICATIONS AND/OR COLORS)
  6. ALL DIMENSIONS ARE FOR REFERENCE USE ONLY.

		AW4S			
QUANTITY		PART NUMBER		DESCRIPTION	
				ITEM	
MATERIALS LIST					
<div>UNLESS OTHERWISE SPECIFIED</div> <div>1) All dimensions are in metric(mm).</div> <div>2) Tolerances are as follows:</div> <div>1 PL DEC ±0.30</div> <div>2 PL DEC ±0.15</div> <div>3 PL DEC ±0.08</div> <div>3) Note reference = <div><div>X</div></div></div>		<div>SIGNATURES</div> <div>DATE</div> <div>DRAWN: JOE 10/MAY/19</div> <div>CHECKED: ORION 10/MAY/19</div> <div>ENGINEER:</div> <div>APPROVAL: TOMMY 10/MAY/19</div> <div>CUSTOMER:</div> <div>THIS DRAWING IS SUPPLIED FOR INFORMATION ONLY. DESIGN FEATURES, SPECIFICATIONS AND PERFORMANCE DATA SHOWN HEREON ARE THE PROPERTY OF THE AMPHENOL CORPORATION. NO RIGHTS OF REPRODUCTION ARE IMPLIED. ALL DIMENSIONS ARE SUBJECT TO NORMAL MANUFACTURING VARIATIONS.</div>		<div>Amphenol</div> <div>Sine Systems - www.amphenol-sine.com</div> <div>44724 Morley Drive</div> <div>Clinton Township, MI 48036</div>	
MATERIAL SPECIFICATIONS:		S-WEDGELOCK, 4 POSITION, AT SERIES			
PROCESS SPECIFICATIONS:					
NEXT ASSY:					
		SIZE		REVISION	
		A C-		AW4S A4	
		SCALE: NONE		SHEET 1 OF 1	

# Mouser Electronics

Authorized Distributor

Click to View Pricing, Inventory, Delivery & Lifecycle Information:

[Amphenol:](#)

[AW4S](#)